

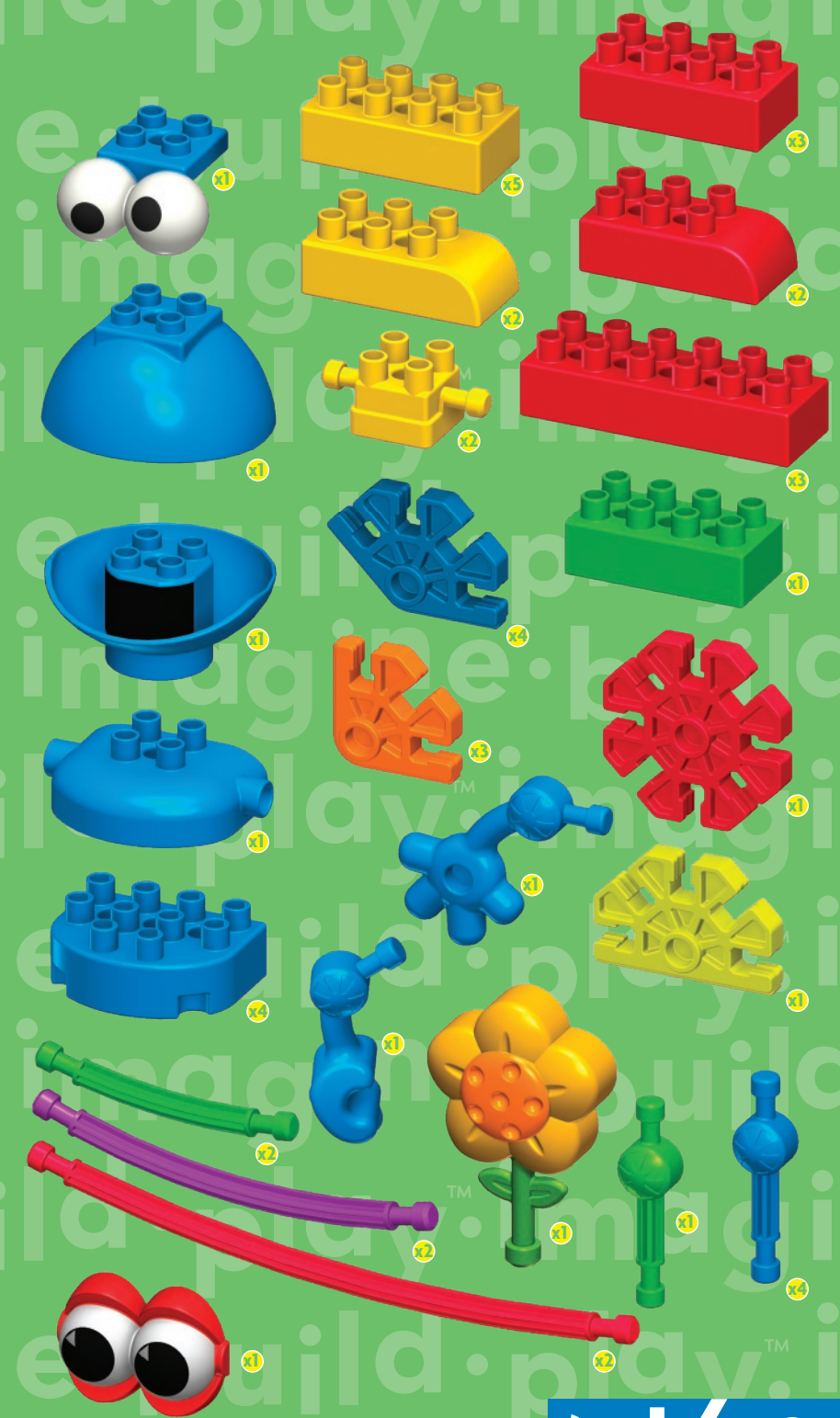
Collect Them All!



123

SESAME STREET

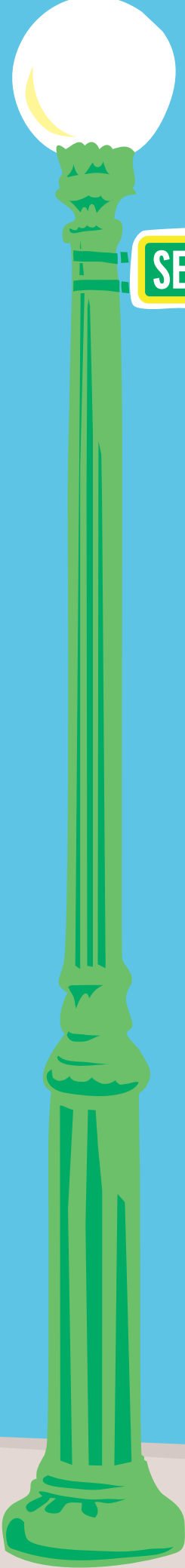
Cookie Monster & Hooper's Store Building Set



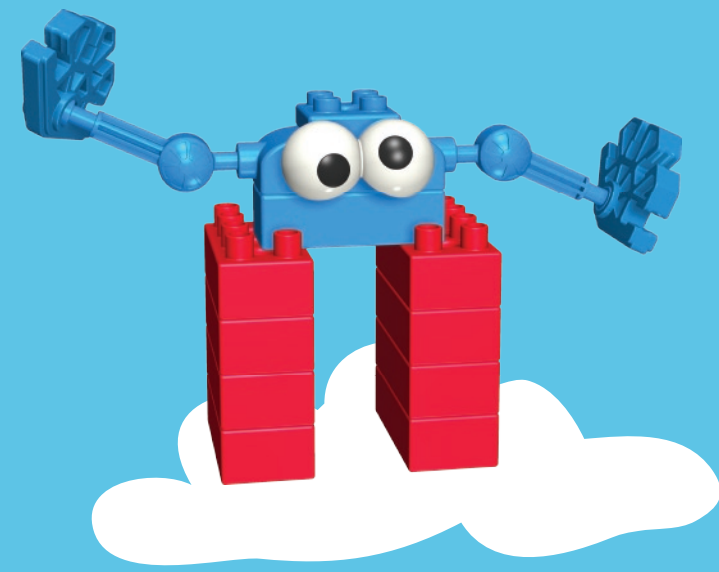
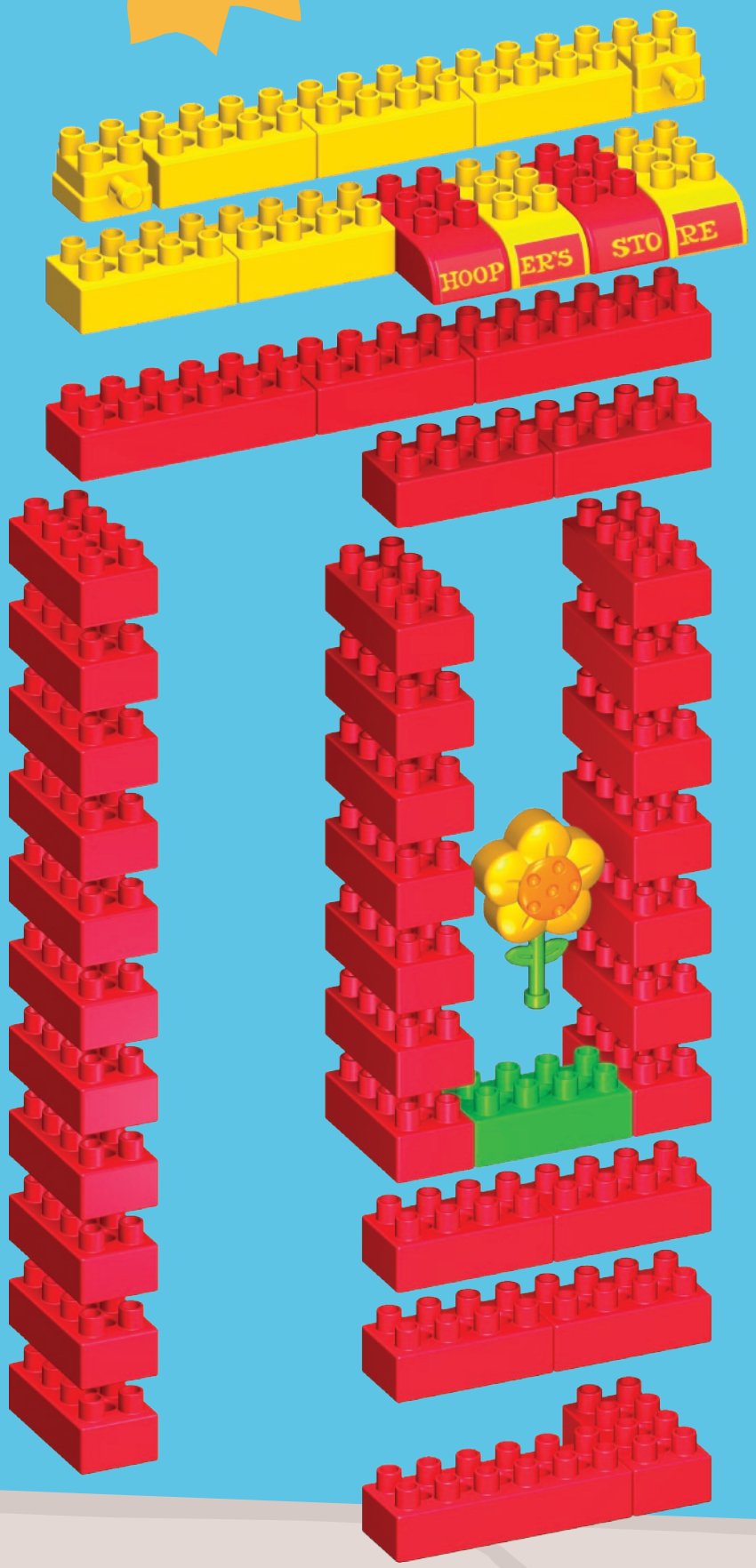
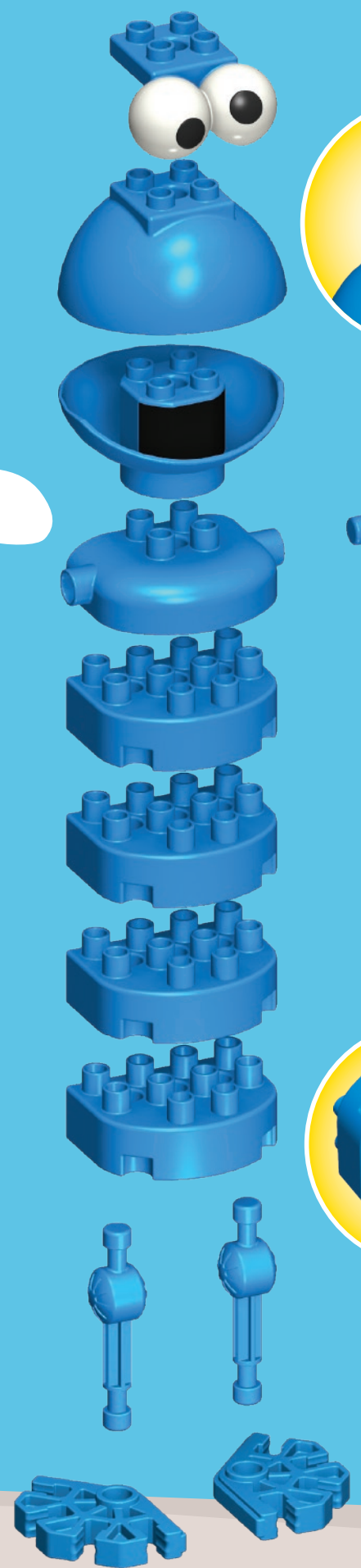
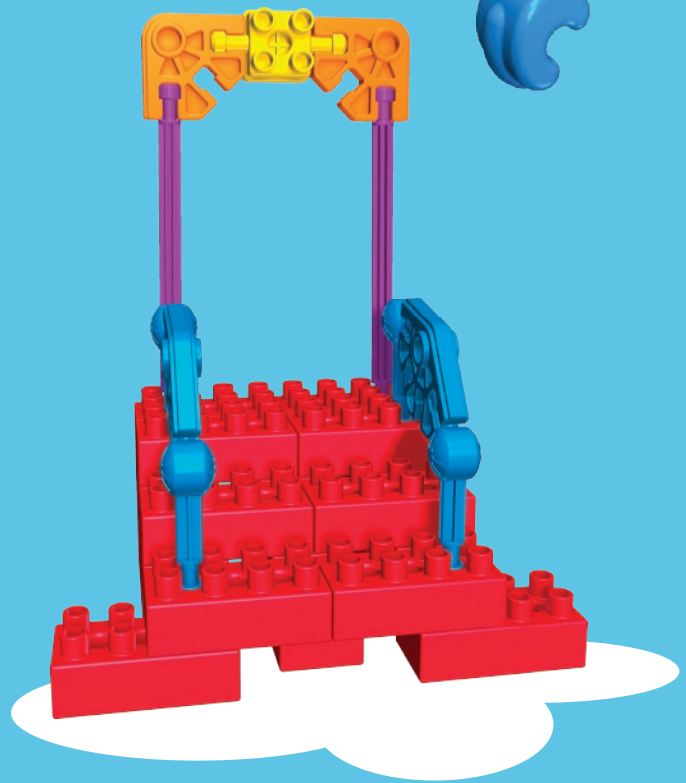
Rassemblez-les tous!

K'NEX Call 1-800-KID-K'NEX (USA/Canada only)
 ©2008 K'NEX Industries, Inc. P.O. Box 700, Hatfield, PA 19440-0700
 Standard KID K'NEX parts made in the U.S.A.
 Special components made in China. Assembled in China. 87
 K'NEX and KID K'NEX are registered trademarks of K'NEX Industries, Inc. Sesame Workshop, Sesame Street and associated characters, trademarks and design elements are owned and licensed by Sesame Workshop. ©2008 Sesame Workshop. All Rights Reserved. Manufactured under U.S. Patents 6,676,474; 6,843,700. Other U.S. and foreign patents pending. Conforms to ASTM F963-03. Product & colors may vary. Most models can be built one at a time.
 Pièces KID K'NEX conçues/fabriquées aux États-Unis. Éléments spéciaux fabriqués en Chine. Assemblé en Chine. 87 K'NEX et KID K'NEX sont des marques déposées de K'NEX Industries, Inc. Sesame Workshop, Sesame Street et tout personnage, marque de commerce et éléments de conception connexes sont détenus et distribués sous licence par Sesame Workshop. © 2008 Sesame Workshop. Tous droits réservés. Fabriqué sous brevets américains 6.676.474, 6.843.700. Autres brevets américains et étrangers en instance. Conforme aux ASTM F963-03. Produits et couleurs peuvent varier. La plupart des modèles ne peuvent être construits qu'un à un.





123
SESAME STREET



Build Cookie Monster and Hooper's Store. Pretend Cookie Monster is working in the store selling fruits and vegetables. Look at the cards to learn how to build different fruits and veggies!

Construis Cookie Monster et Hooper's Store. Imagine que Cookie Monster travaille au magasin en vendant les fruits et les légumes. Regarde les cartes pour apprendre à construire les différents fruits et légumes !