

# kid K'NEX.COM



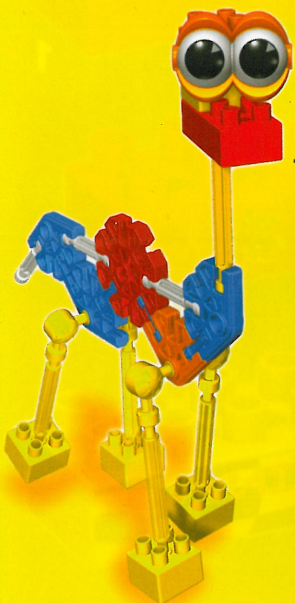
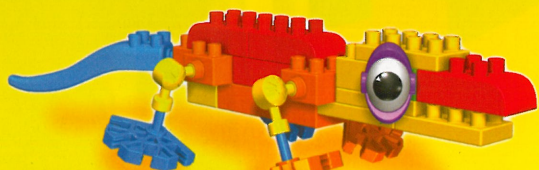
## RAILROAD PALS BUILDING SET™



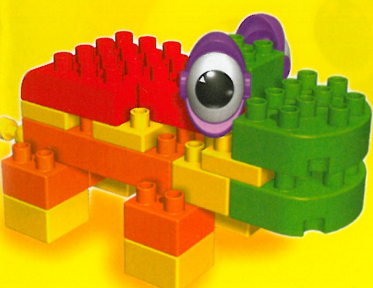
## PANDA PALS BUILDING SET™



## FURRY FRIENDS BUILDING SET™



## ZOO BUDDIES BUILDING SET™



## BUILDING ZONE BUDDIES BUILDING SET™

# kid K'NEX.COM

K'NEX Customer Service. Call 1-800-KID-KNEX (USA/CAN only); Write to email@knex.com  
 For Customer Service outside USA/CAN contact your local distributor at: <http://www.knex.com/distributors>  
 (FR) Le Service clients hors d'USA/CAN, s'il vous plaît contacter le distributeur local.  
 L'information de distributeur peut être trouvée à <http://www.knex.com/distributors>  
 (AZ) (NZ) (UK) (DE) (NL) (BE) (CH) (CL) (PE) <http://www.knex.com/distributors>  
 (UK) TOMY Careline, PO Box 20, Totton, Hants, SO40 3YF, England; Tel 023 8066 2600  
 (FR) SAV TOMY France, Parc d'affaires International, 74166 ARCHAMPS ; Tél 0820 013 013  
 (UK) (FR) (DE) (NL) <http://www.tomy.eu>

K'NEX and KID K'NEX are registered trademarks of K'NEX Limited Partnership Group.  
 K'NEX et KID K'NEX sont des marques déposées de K'NEX Limited Partnership Group.  
 K'NEX y KID K'NEX son las marcas registradas de K'NEX Limited Partnership Group.

Manufactured under U.S. Patents/Fabriqué sous brevets américains/Fabricado bajo patentes de EE.UU. 6,676,474; 6,843,700. Registered 244,590. Enregistré 244,590. Registrado 244,590. Other U.S. and foreign patents pending. Autres brevets américains et étrangers en instance. Otras patentes de EE.UU. y países extranjeros pendientes.

Conforms to ASTM F963-07. Conforme aux ASTM F963-07. Cumple con F963-07 de la ASTM.

### K'NEX

©2009 K'NEX Limited Partnership Group  
 P.O. Box 700  
 Hatfield, PA 19440-0700



409428.11-V1-11/08



# kid K'NEX



## 3+



## RACETRACK BUDDIES BUILDING SET™

**WARNING:**  
 CHOKING HAZARD - Small parts.  
 Not for children under 3 years.

**AVERTISSEMENT:**  
 DANGER D'ÉTOUFFEMENT - Pièces de petite taille.  
 Ne pas donner aux enfants de moins de 3 ans.

30 pcs  
 pzs/pzas

